

COMPANY PROFILE



## ABOUT THE COMPANY

Ningzim is metal fabrication company, specialised in working with sheet metal for light and medium structural, mechanical and general engineering works. We are a level 1 B-BBEE CONTRIBUTOR, with 135% PROCUREMENT RECOGNITION on the new codes.





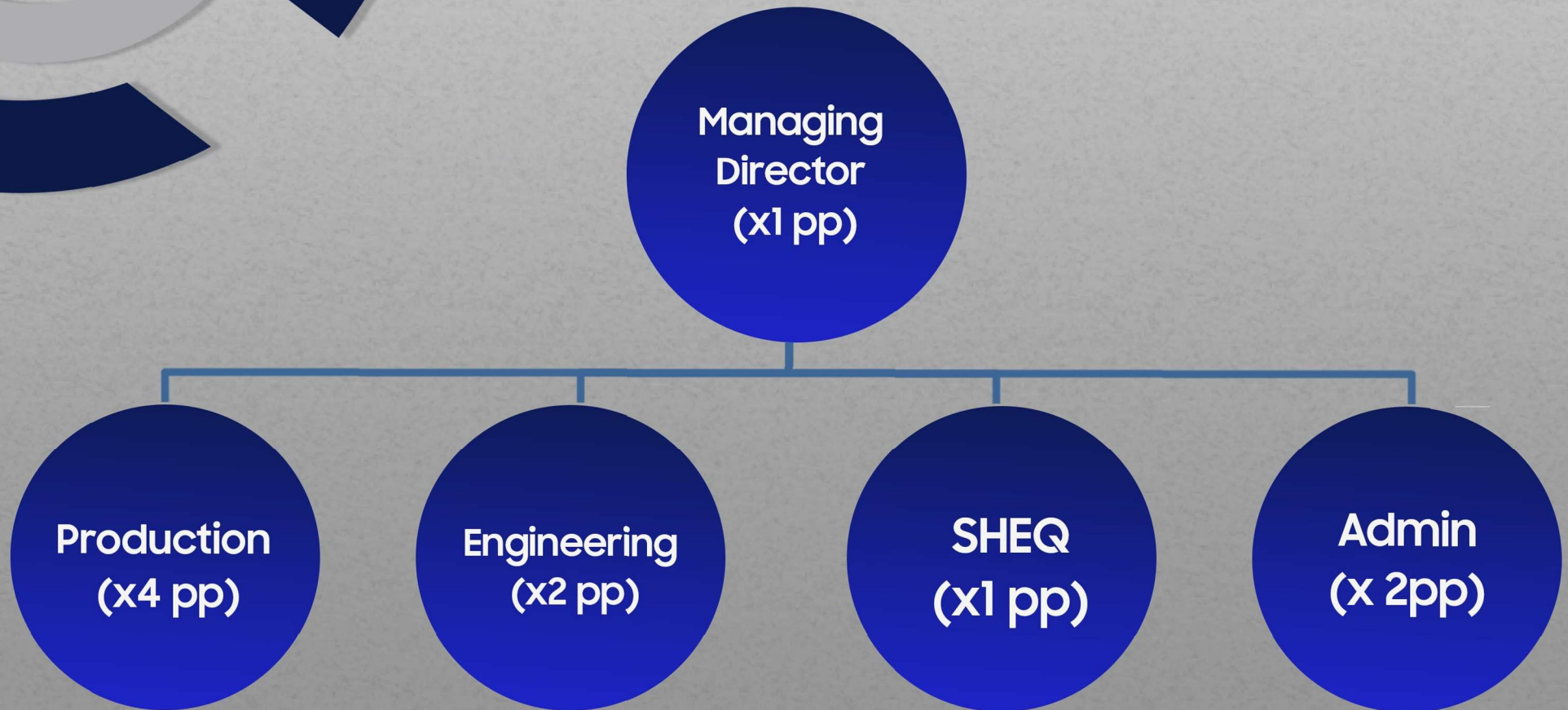
## OUR SERVICES

- Design
- Guillotining
- CNC rolling
- CNC bending
- Laser cutting
- Profile cutting
- High definition plasma cutting
- CNC machining centres (turning, milling)
- Conventional machining for light and medium engineering
- Welding
- Brushing
- Polishing
- Metal finishing processes are outsourced to our partners
- Specialized roof sheeting and installations
- Origami, IBR, stainless steel etc.
- Site works and mechanical installations





# ORGANOGRAM



## ABOUT NINGZIM

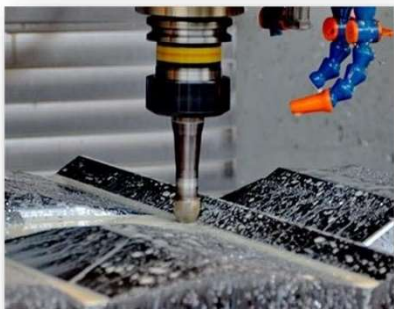
We produce or manufacture to design specifications, or engage our draughting department for development of customer products. To support our customers, we have teams of installation engineers, with over 20 years of experience. They ensure our manufactured products are installed timeously and efficiently, as an extension of our excellent customer service and high quality.

To guarantee only the highest quality standards, we employ engineers, boilermakers and coded welders (ASME IX qualified). We are also SABS ISO 9001:2015 certified.



Ningzim is an excellent, efficient company that is also competitively positioned in the market; due to our agile team and company size we are competitively priced. It is precisely our agility that allows us to work flexibly, ensuring production time can be doubled if necessary, to increase capacity on short notice.

We at Ningzim, are confident that the above will be of interest to your company. We look forward to adding your company to our list of long and harmonious client relationships in South Africa.





## RAIL AND ROLLING STOCK COMPONENTS

Ningzim is a manufacturer and supplier of rail and rolling stock components. We manufacture and supply various machined and fabricated components. We specialize in locomotive (freight) and passenger car (coach) components.

- Freight wagon components
- Bogie components
- Exterior components
- Interior components
- Accessories and specialized Fasteners
- We also supply EN 45545 certified parts





We feel confident that the above will be of interest to your company, and look forward to being of service to you in building a long and harmonious relationship with your company, as we have done with many of the major companies throughout South Africa.



**BEE STATUS**

135% Level 1 Contributor



E-MAIL: [sales@ningzim.com](mailto:sales@ningzim.com)

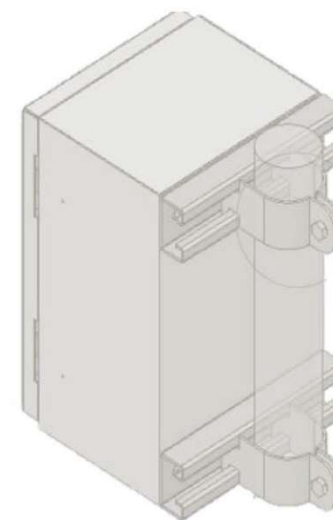
FAX NUMBER: 011 872 0092

TEL NUMBER: 011 873 6125

PO BOX 2973

BEDFORDVIEW

2008





Dustbin Cover



Oil Can Perforator



Integrate Laser Cut Parts



CNC Bending Part



Machined Parts



Powder Coated Part



Fabricated Enclosure



Volume Production





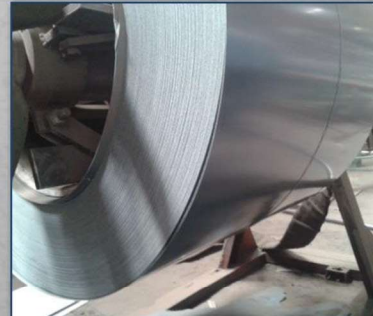
Cut & Bend Brackets



Machined Flanges



Material Coil



Lobster Bends



Profile Cut Parts



Stainless Steel Handrail



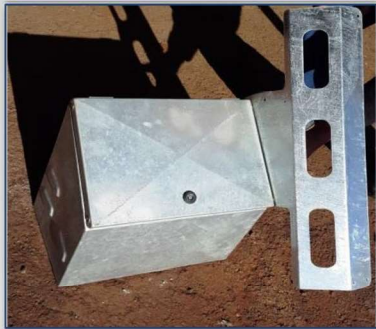
Non Destructive Testing (NDT)



Assembly



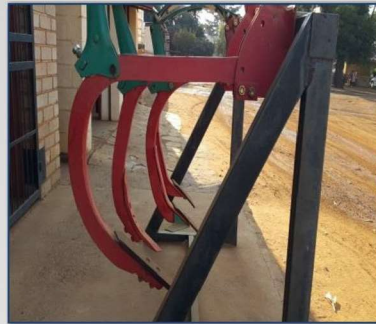
Galvanized Steel Enclosure



Powder Coated Enclosure



Agricultural Implements



Stainless Steel Enclosures



Cable Trays



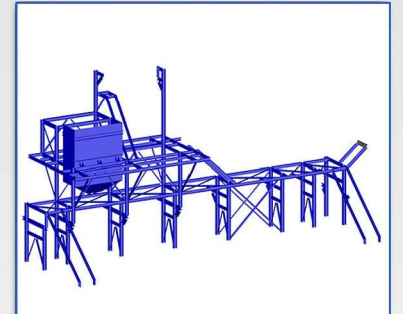
Chain



Laser Cutter



CAD Structural Design





High Def Plasma



Fabrication



Laser Cutter



Overhead Cranes





**Ningzim (PTY) LTD**

241 Wadeville Road

Wadeville

Germiston

1422

PO BOX 2973 BEDFORDVIEW 2008

**Company Registration Info:**

Company Reg: 2018/487836/07

VAT No: 4290285594

E-MAIL: [sales@ningzim.com](mailto:sales@ningzim.com)

FAX NUMBER: 011 872 0092

TEL NUMBER: 011 873 6125

**Banking Details:**

Bank: Standard Bank

Branch: Eastgate

Account Number: 282 286 411